



alonza[®]

- TILES ADHESIVE
- EPOXY GROUT
- TILES GROUT
- WATER PROOFING





ABOUT US

Welcome to Alonza,

At Alonza, we're passionate about providing high-quality tile adhesive along with other grouting & bonding solutions that exceed our customers' expectations. In a short span of time, we have established ourselves as a trusted leader in the manufacturing and distribution of premium tiling products.

We are committed to excellence in every aspect of our business, from product development and manufacturing to customer service and support.

At Alonza, quality is our top priority. We adhere to stringent quality control standards throughout the manufacturing process to ensure that every batch of products meets our rigorous specifications.



**Exceptional
Quality**



**Reliability &
Consistency**



**Innovative
formulations**



INDEX



■ **TILES ADHESIVE**

AL1 (Grey)
AL2 (Grey & White)
AL3 (Grey & White)
AL4 (Grey & White)
AL5 (Grey & White)
BLOCK ADHESIVE

■ **GROUT & EPOXY GROUTS**

EPOXY GROUT
TILES GROUT

■ **OTHER CHEMICAL**

TILE CLEANER
SBR SUPER LATEX
CEMENT BOND

■ **ACCESSORIES**

TILES SPACER
TILES EQUALIZER



ALONZA TILE ADHESIVES

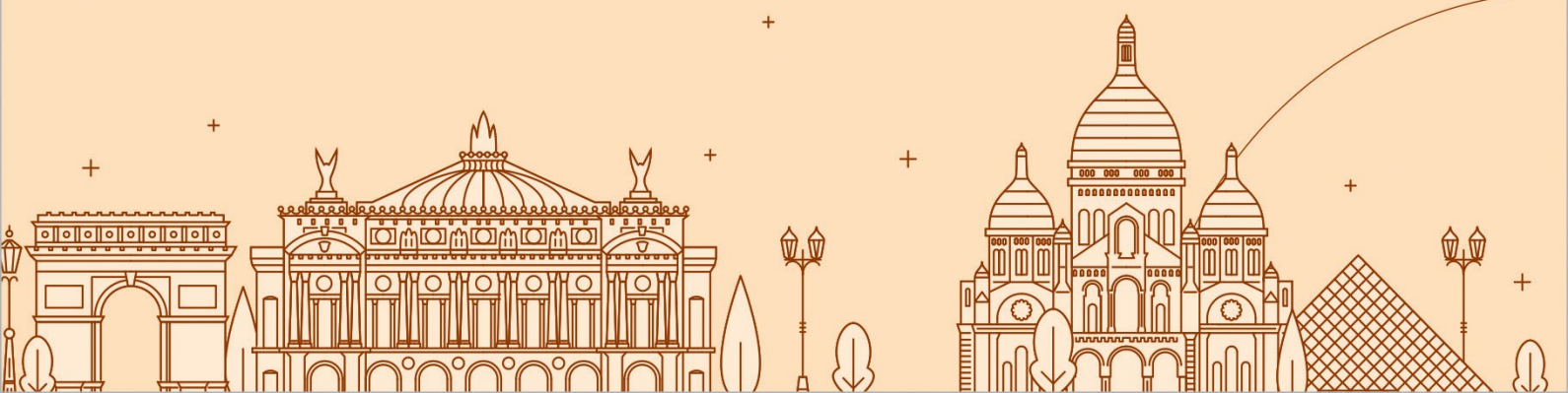
Tile adhesive, also known as tile glue, is a specialized type of adhesive used to bond vitrified, ceramic porcelain, glass, and natural stone tiles to various substrates such as concrete, wood, drywall, or existing tiles. It's a readily available mixture of cement, polymers, carefully chosen aggregate particles, and additional additives. It forms a strong and durable bond between the tile and the substrate, ensuring the stability and longevity of the tile installation.

Tile adhesive typically comes in the form of a powder that is mixed with water to form a paste-like consistency. Depending on the specific product and application requirements, tile adhesive may have different properties such as fast-setting, flexible, or waterproof

WHY TILE ADHESIVE INSTEAD OF CEMENT OR TRADITIONAL METHODS

1. Stronger bond
2. Reduced risk of cracking
3. Uniform coverage
4. Faster installation
5. Versatility
6. Long term performance
7. Reduce stress on building structure

Overall, tile adhesive plays a crucial role in ensuring the success and durability of tile installations, providing a strong and reliable bond that withstands the test of time.



CHARACTERISTICS:

- **Pot Life:** 2-4-8 Hrs at Standard Conditions depending on grade.
- **Open Time:** 20-30 min at Standard Conditions depending on grade.
- **Adjustment Time:** 20-30 Minutes depending on grade.
- **Coverage:** 25-35 sqft per 20 kg bag (Depend upon BED Thickness)
- **Packaging:** 20kg bag
- **Mixing ratio:** 30% water with 1 bag of 20kg adhesive

INSTRUCTIONS FOR USE:

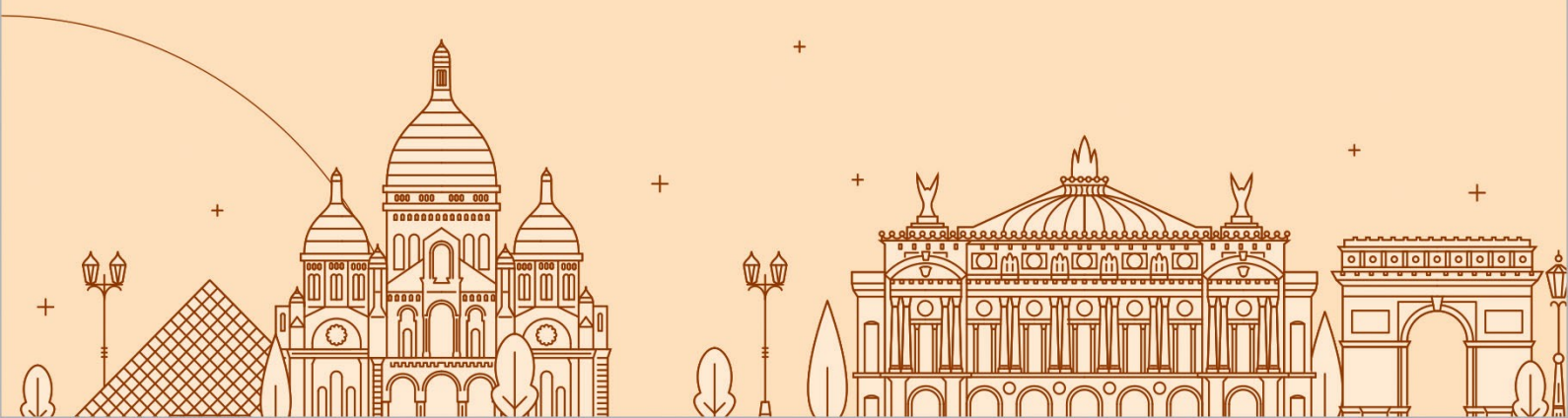
- Surface should be clean, dry, and free from dust and debris.
- It should be sufficiently cured in a way that any shrinkage has already occurred.
- Mix Tile Adhesive with water following the instructions on the packaging.
- Continuously stirring to avoid lump formation in making of smooth paste.
Let the paste rest for few minutes before starting the application.
- Apply to the surface using a suitable notched trowel.
- Place tiles firmly into the adhesive, ensuring full coverage.

SHELF LIFE & STORAGE:

12 months after manufacturing date in original and non-open packaging, under cover, in dry condition, away from humidity, protected from extreme temperatures and direct sunlight.

SAFETY PRECAUTIONS:

The product contains cement powders which, when mixed with water, release alkalis that could be harmful to the skin. It is preferable that the application be done in a ventilated area, and to wear protective gear for hands, eyes and respiratory system and to avoid breathing of the dust. Splashes on the skin should be washed away by cleaning with soap and water. In case of contact with eyes, wash thoroughly with clean water. If swallowed, do not induce vomiting; in both cases seek medical attention. The product is non-flammable.





PRODUCT DETAILS:

Our AL-01 Tile Adhesive offers a practical and efficient solution for light tiling projects where flexibility and cost-effectiveness are key. For laying tiles in difficult and demanding situations, consult Alonza team regarding use of a higher performance adhesive.

APPLICATION:

- Ideal for laying small tiles on interior walls and Floor areas only.
- Perfect for residential projects and light commercial applications where heavy traffic is not a concern.
- For laying tiles on Concrete, Stone walls (cleaned and prepared), Cementitious plasters and renders, Cement Blocks

LIMITATIONS:

- Gypsum substrates are not advisable.
- Not to be used in swimming pool.
- Not to be used on Facades and External Locations.
- Available in Grey color only.
- Not to be used for low water absorption tiles on wall

Packaging 20kg



AL2 (Grey & White)



AL2 (Grey)



AL2 (White)

Packaging 20kg



AL2 (GREY & WHITE)

PRODUCT DETAILS:

Step up your tiling game with our AL-02 Tile Adhesive, designed for standard performance and versatility. This adhesive offers enhanced bonding strength compared to AL-01 allowing better installation. It provides excellent adhesion to a wide range of substrates. Whether you're tackling bathroom renovations or kitchen remodels, our AL-02 Grade Tile Adhesive delivers consistent results with ease.

APPLICATION:

- Ideal for laying all type of ceramic and vitrified tiles except some bigger sizes slabs on floor and all ceramic body tiles on wall and some vitrified tiles on wall.
- For interior or exterior wall and floor use both.
- For laying tiles on Concrete, Stone walls (cleaned and prepared), Cementitious plasters and renders, Cement Blocks.

LIMITATIONS:

- Substrate made of gypsum is not advisable.
- Not to be used on Facades and External wall locations.

Packaging 20kg



AL2 (White)



AL2 (Grey)





AL3(Grey & White)



AL3(Grey)



AL3(White)

Packaging 20kg



AL3 (GREY & WHITE)

PRODUCT DETAILS:

Elevate your tiling projects with our AL-03 grade Tile Adhesive, engineered for high performance and durability. Formulated with advanced polymers and additives, this adhesive offers superior bond strength and resistance to moisture, heat, and heavy foot traffic. Perfect for demanding environments such as showers, swimming pools, and commercial spaces.

APPLICATION:

- Ideal for laying all type of ceramic and vitrified tiles on floor and all ceramic and vitrified body tiles on wall except some large format and tiles with more thickness than regular.
- For interior or exterior wall and floor use both.
- Also used for marble, granite, quartz, Tile on tile, mosaics tiles, Stone, swimming pool, window and door framing.

LIMITATIONS:

- Substrate made of gypsum is not advisable.
- Not to be used on Facades.

Packaging 20kg



AL3 (White)



AL3 (Grey)





AL4(Grey & White)



AL4 (Grey)



AL4 (White)

Packaging 20kg



AL4 (GREY & WHITE)

PRODUCT DETAILS:

Experience the ultimate in tiling excellence with our 4th Grade Premium Tile Adhesive, crafted for professional contractors and discerning homeowners alike. Being water and frost resistant, it is engineered to meet the most stringent performance standards. This adhesive delivers unmatched bond strength, flexibility, and durability.

APPLICATION:

- Ideal for laying all type of ceramic and vitrified tiles on floor and all ceramic and vitrified body tiles on wall including tiles with more thickness.
- For interior and exterior wall and floor use both.
- Used for marble, granite, quartz, Tile on tile, mosaics tiles, swimming pool, window and door framing, metal or glass tiles, terrazzo and other natural stone.

Packaging 20kg



AL4 (White)



AL4 (Grey)





AL5(Grey & White)



AL5 (Grey)



AL5 (White)

Packaging 20kg



AL5 (GREY & WHITE)

PRODUCT DETAILS:

Discover the pinnacle of all in one tile adhesive technology with our AL-05 Tile Adhesive, renowned for its premium quality and unrivaled performance. Meticulously formulated using the finest ingredients, this adhesive offers unparalleled bond strength, adhesion, and durability. Engineered to withstand extreme conditions and heavy loads, it is the preferred choice for luxury residential and commercial projects.

Packaging 20kg



AL5 (White)



AL5 (Grey)





BLOCK JOINTING MORTAR

High Performance Light Weight Block Adhesive



- Excellent Coverage
- Faster Application
- Less Shrinkage & Premixed
- High Strength & Economical

NET WT.
40 Kg.



**PRODUCT DETAILS:**

Block Fix, also known as block bonding adhesive, is a specialized construction adhesive designed for bonding concrete blocks, bricks, stones, and other masonry materials together. It is blend of cement, polymers & other raw materials offering a convenient and efficient alternative for various construction projects.

APPLICATION:

Block Fix is commonly used to bond concrete blocks, bricks, or stones together when constructing walls for residential, commercial, or industrial buildings.

ADVANTAGES:

Strong Adhesion, Versatility, Ease of Use, Weather Resistance, Enhanced Durability, Self- curing

PACKAGING & COVERAGE:

Pack size: 40 kg

Coverage: 130-140 sqft per 40kg bag,

The actual coverage of block adhesive can vary depending on factors such as the type of block, application method, surface porosity, and environmental conditions.

SHELF LIFE & STORAGE:

Shelf life is 12 months from the date of manufacturing in unopened condition. Store in a cool & dry place.





EPOXY GROUT



Packaging 1 kg & 5 kg.

PRODUCT DETAILS:

Epoxy is a type of grout used in tile installations, particularly in areas where high strength, durability, and resistance to stains and moisture are required. Epoxy Grout is a three-part system, comprising of PART A (resin), PART B (Hardener) and PART C (Epoxy) for ease of application.

APPLICATION:

Epoxy grout is typically used in conjunction with Vitrified, ceramic, porcelain, or natural stone tiles. It is applied to the joints between tiles using a rubber float or grout float and then wiped clean with a damp sponge to remove excess grout from the tile surfaces. Once cured, epoxy grout forms a strong, waterproof seal that protects the tiles and substrate from moisture and damage.

PACKAGING: 1kg & 5 kg.

Components	1 kg Pack	5 kg Pack
Part A (Resin)	200 gm	1000 gm
Part B (Hardner)	100 gm	500 gm
Part C (Filler)	700 gm	3500 gm

SHELF LIFE & STORAGE:

Shelf life is 12 months from the date of manufacturing in unopened condition. Store in a cool & dry place.





TILE GROUT



Packaging 1 kg

PRODUCT DETAILS:

Alonza Tile grout is a cement-based, polymer-modified material used to fill the joints between tiles after they have been installed. It serves several important functions like Stabilizing Tiles, Waterproofing, Aesthetic Enhancement, Preventing Debris Build-Up

APPLICATION:

Flooring & wall, for indoor and outdoor spaces both.

PACKAGING: 1kg & 5 kg.

Components	1 kg Pack	5 kg Pack
Part A (Resin)	200 gm	1000 gm
Part B (Hardner)	100 gm	500 gm
Part C (Filler)	700 gm	3500 gm

SHELF LIFE & STORAGE:

Shelf life is 12 months from the date of manufacturing in unopened condition. Store in a cool & dry place.

COLORS





TILE CLEANER



Packaging 1 ltr

PRODUCT DETAILS:

Alonza Tile cleaner is a specialized cleaning solution designed to effectively remove dirt, grime, stains, and other contaminants from tile surfaces. It is formulated to penetrate the pores of the tile and grout, lifting away stubborn stains and restoring the original beauty of the tiles.

APPLICATION:

- Flooring & wall, for indoor and outdoor spaces both.
- Please note, do not use on surface that are not resistant to acid such as natural stone, Terrazzo & Cp fittings.

BENEFITS:

- Powerful cleaning action
- Stain removal
- Hygienic
- Prevent damage

PACKAGING: 1ltr.



SBR SUPER LATEX



Packaging 1 ltr

PRODUCT DETAILS:

Introducing our premium SBR (Styrene-Butadiene Rubber) Super Latex – a hallmark of innovation and quality in the latex industry. Designed for the discerning client who demands both performance and sustain ability, our SBR Super Latex is tailored to meet the rigorous standards of various applications, from construction and waterproofing and repairs to adhesives and coatings.

APPLICATION:

- Construction materials
- Waterproofing membranes
- Sealants and caulks
- Adhesives and glues
- Protective coatings

PACKAGING: 1ltr.



CEMENT BOND



Packaging 1 ltr

PRODUCT DETAILS:

Alonza Cement Bond is a specialized adhesive or bonding agent in liquid form used in construction to ensure effectiveness or quality of the adhesion between cement paste and aggregates in concrete or between two cementitious surfaces.

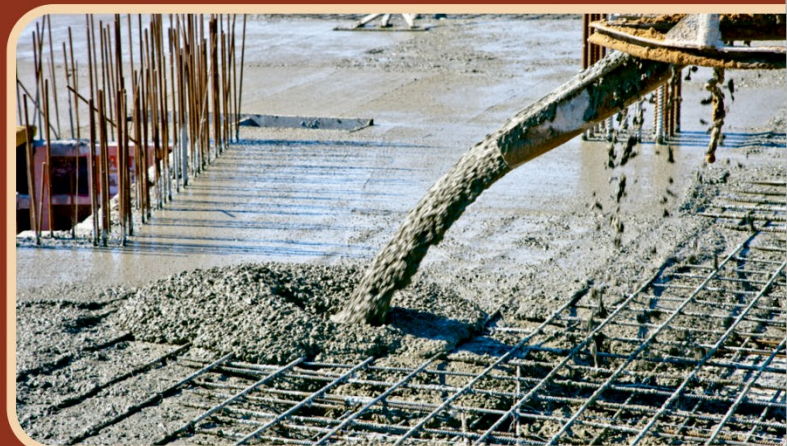
FEATURES:

- Improves work ability and compressive strength.
- Increasing Adhesion
- Improved Structural Integrity
- Environmental Resistance
- Reduced needs of frequent repairs
- Cost-effective solution to extending the life of existing structures.

USAGE:

In normal conditions, 150 – 250 ml per 50kg cement. Please note, always read the manufacturer's instructions before mixing or diluting the bonding agent.

PACKAGING: 1ltr.

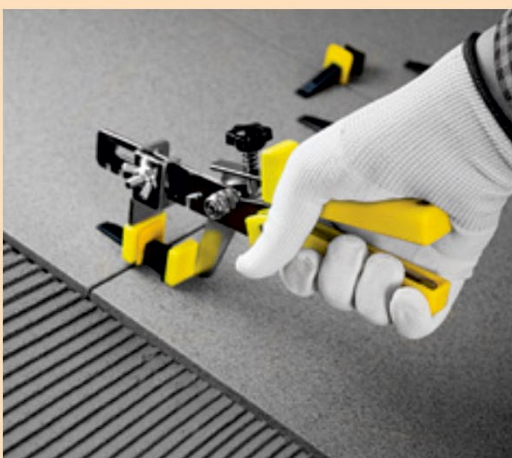




SPACER



TROWEL



TILE LEVELING KIT



Mfg & Marketed By :

📍 **ALONZA INTERNATIONAL**
Pacific Business Park, Nr. The Fern Residency,
N.H-8A, At. Mahendranagar, Morbi-363642,
Gujarat, INDIA.

☎ **Customer Care : +91 95107 50108**
✉ **Email : alonzachemical@gmail.com**
Web : www.alonzainternational.com

